



**Division of Criminal
Justice Services**

NYS SNUG Street Outreach

Damon Bacote, Deputy Commissioner

Ykim Anderson, Program Manager, Poughkeepsie

OCTOBER 16, 2024

Office of Youth Justice

New York State Division of Criminal Justice Services (DCJS) enhances public safety by providing resources and services that inform decision-making and improve the quality of the criminal justice system. The DCJS Office of Youth Justice provides funding, training, and expertise to promote positive change and improve the quality and responsiveness of the state's youth justice system.

Staff of the Office of Youth Justice recognize and acknowledge that historical injustices and systemic racism within the criminal justice system have caused measurable harm to communities of color and policies and practices have eroded trust between government agencies and the communities they serve. We are steadfastly committed to addressing the lasting impact of these wrongs in all facets of our work by fostering open dialogue, rebuilding trust, and promoting healing within communities that have been harmed.

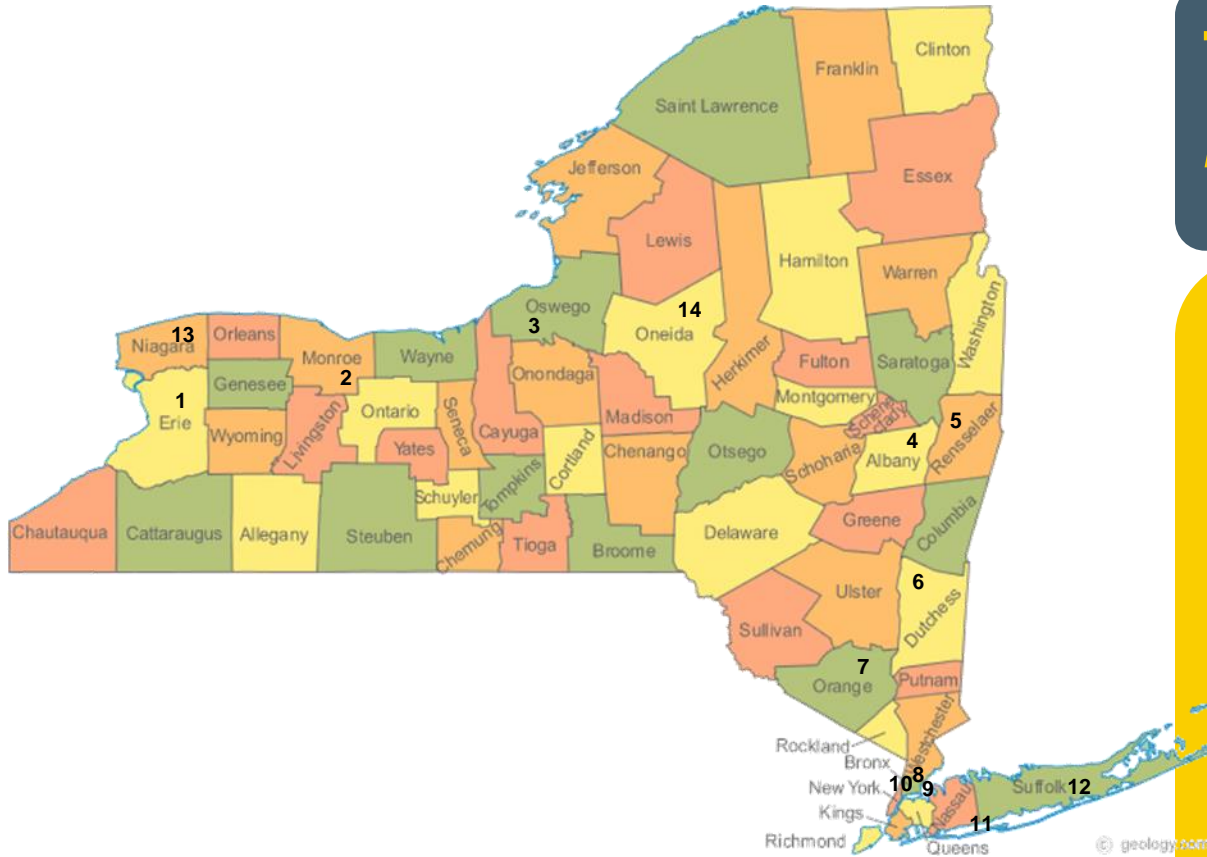
The Office of Youth Justice is dedicated to transparency, accountability, and equity, and will continue to work collaboratively with local partners and prioritize community-led initiatives as we strive to remove barriers and advance community justice.

OVERVIEW

SNUG

- SNUG utilizes a public health approach to address gun violence by identifying the source, interrupting the transmission, and changing group norms.
- Comprehensive state oversight allows for the program to be delivered consistently across the 14 communities served by the program, even though a local nonprofit organization administers the state and federal grant funding in those communities.
- New York's SNUG Street Outreach program is unique from others that operate in the state and communities across the country because of its strong state oversight, administration, technical assistance, and training.
- The state-specific model has comprehensive policies and protocols related to hiring, identifying high-risk participants, interacting with police, and the use of data to identify neighborhoods served by the program.
- The program also embeds social workers and case managers at SNUG sites and hospitals to assist individuals and families who don't often identify as victims, have trauma resulting from long-term exposure to violence, and may be skeptical or hesitant to seek counseling and case management support.

SNUG Sites in New York State



Target Areas:

A designated section of a city where rates of violence are high and where SNUG outreach teams focus their efforts

1. Buffalo
2. Rochester
3. Syracuse
4. Albany
5. Troy
6. Poughkeepsie
7. Newburgh
8. Mount Vernon
9. Yonkers
10. Bronx
11. Hempstead
12. Wyandanch
13. Niagara
14. Utica

Outreach Staff Training

- All new SNUG employees receive 40 hours of training, and all supervisors receive training through a 32- hour intensive management program.
- Training for SNUG outreach teams in Trauma Systems Therapy began in 2020 and continues to add a trauma-informed lens to all aspects of SNUG outreach.
- Outreach teams and Social Work staff have had an intensive Motivational Interviewing curriculum that began in early 2022 and is ongoing.
- DCJS is committed to ongoing, innovative trainings for all SNUG workers to help them grow professionally. SNUG has recently received training in topics such as hip-hop therapy, black male grief, vicarious trauma, Healing Centered Engagement, and human trafficking.

Participants

By engaging with the highest risk youth, SNUG provides young people who are disconnected from their families, schools and communities with positive role models, healthy relationships and hope for a future without violence.

Outreach workers take participants to events and places they have never had the opportunity to see. They connect them with resources such as educational institutions and job training services – to help break patterns of violence. They also connect participants, as well as their friends and families, to SNUG case management and mental health services.

SNUG participants are required to meet at least 4 of the criteria below:

- 14-25 years of age
- Active in a street organization
- History of violence
- Engaged in high-risk activity
- Weapons carrier **if someone is a weapons carrier, they are not required to meet any other criteria**
- Recently shot, or have a family member who has been shot within last 6 months
- Recently released from prison

Outreach Staff Training


- Outreach workers leverage their ties within the community and respond to shootings to prevent retaliation, detect conflicts and resolve them peacefully before they lead to additional violence.
- SNUG personnel are notified by members of the community or law enforcement contacts when shootings involving injuries occur so that they can respond to address any retaliatory plans that might be formulating.
- Anytime a shooting involving injury occurs in a SNUG target area, SNUG Outreach and Social Work teams respond to the shooting scene and the hospital to begin work on ending the cycle of gun violence.
- SNUG's presence at the hospital ER has been instrumental in stopping further violence and settling things down.

SNUG/POLICE RELATIONSHIP


Police Relationship

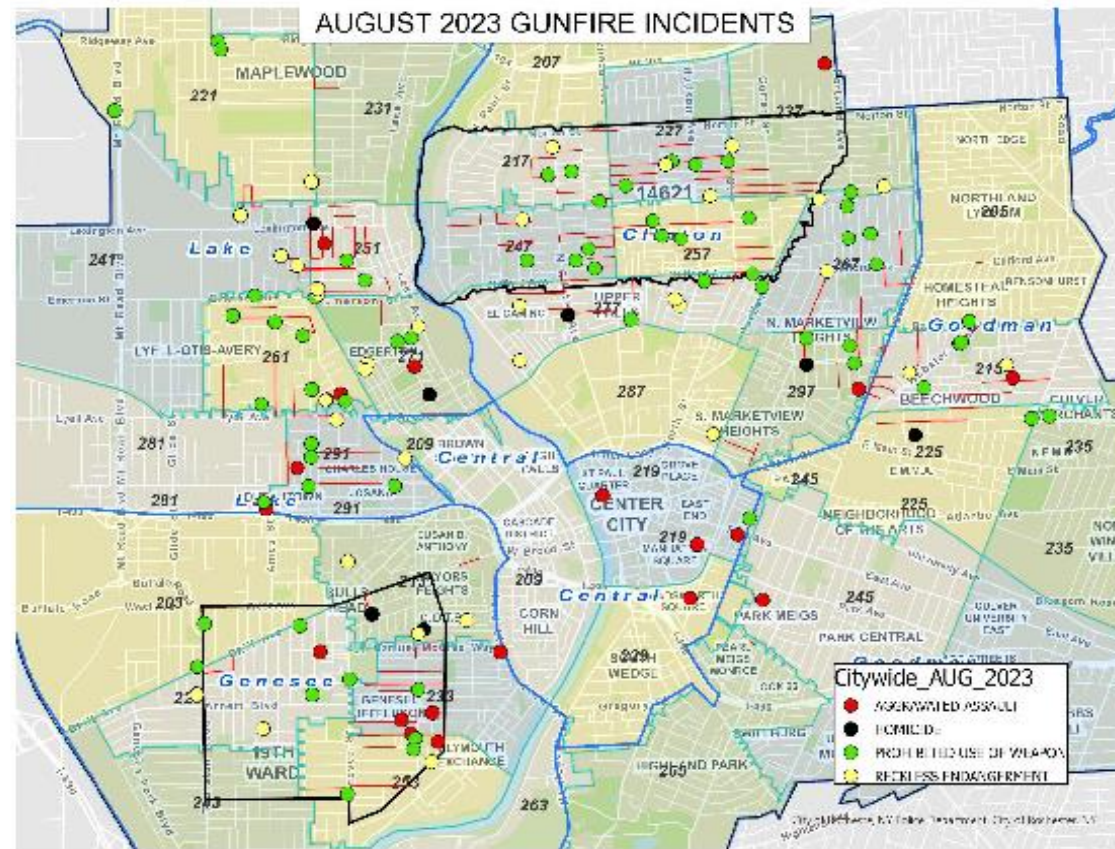
- In each city, the SNUG Program Manager, Police Liaison, and Crime Analyst meet at least once per month to discuss:
 - Shootings within or related to the SNUG target area
 - Information received by police about potential high-risk participants (one-direction information sharing; SNUG does not provide information to police)
 - Discuss potential gang problems that may arise in public areas like schools, train stations, malls, etc. which allows SNUG to have a presence in those areas and prevent incidents from occurring
- Importance of SNUG's credibility in the community
 - SNUG members should not be seen as working with police
 - The credibility of the outreach team is imperative to working closely with the highest-risk individuals
 - Only the program manager interacts with police
 - Police interaction with SNUG staff should look like an interaction with any citizen of that city (no special treatment)

Police Relationship

 **The Gun Involved Violence Elimination (G.I.V.E) Initiative**
Rochester, New York, Monroe County

MONTHLY SNUG REPORT
PREPARED BY: HEATHER RODRIGUEZ, G.I.V.E DIRECTOR





Police Relationship

Shooting Victims

	Jan	Feb	Mar	April	May	June	July	Aug	Sept	Oct	Nov	Dec	Annual Total	YTD	YTD Change: 22 v 23
2014	5	6	0	11	11	14	20	12	10	7	7	11	114	47	
2015	2	1	4	7	11	8	6	9	11	11	10	5	85	33	
2016	5	4	9	8	11	18	10	10	11	8	13	7	114	55	
2017	11	5	5	10	5	11	9	10	9	5	10	2	92	47	
2018	3	3	8	9	10	10	19	8	5	9	4	14	102	43	
2019	4	3	3	2	5	14	8	2	4	6	0	3	54	31	
2020	1	4	1	8	8	19	19	16	26	5	14	7	128	41	
2021	11	6	4	10	25	11	19	6	16	7	3	5	123	67	
2022	5	3	5	8	6	12	3	8	7	8	3	7	75	39	
2023	5	8	3	8	3	2								29	-10

Shooting Homicides

	Jan	Feb	Mar	April	May	June	July	Aug	Sept	Oct	Nov	Dec	Annual Total	YTD	YTD Change: 22 v 23
2014	0	1	0	0	1	0	1	4	0	3	1	2	13	2	
2015	0	1	0	0	2	1	1	1	3	1	0	0	10	4	
2016	0	1	2	1	0	1	1	1	2	0	0	0	9	5	
2017	2	1	1	0	2	0	1	0	0	0	0	0	7	6	
2018	0	0	1	2	2	1	5	1	1	1	1	3	18	6	
2019	0	1	1	1	1	1	2	1	0	0	0	1	9	5	
2020	0	0	0	2	1	5	0	1	2	0	2	0	13	8	
2021	2	0	0	4	4	1	1	0	1	1	0	1	15	11	
2022	2	0	3	3	2	2	1	2	2	1	0	2	20	12	
2023	1	0	1	0	0	0								2	-10

Police Relationship

SNUG Zone Shooting Incidents Involving Injury or Death Through July 2023

Jurisdiction	2021	2022	Change From 2021	Jan-Jul 2022	Jan-Jul 2023	Change From 2022
Albany	37	26	-11	14	17	+3
Buffalo East	101	66	-35	36	26	-10
Buffalo West	46	27	-19	16	9	-7
Buffalo Total	147	93	-54	52	35	-17
Hempstead	21	6	-15	5	8	+3
Mt. Vernon	17	12	-5	5	5	0
Newburgh	21	16	-5	11	5	-6
Poughkeepsie	18	19	+1	9	8	-1
Rochester East	117	56	-61	35	27	-8
Rochester West	43	36	-7	21	28	+7
Rochester Total	160	92	-68	56	55	-1
Suffolk	11	7	-4	0	5	+5
Syracuse	58	57	-1	40	29	-11
Troy	9	13	+4	9	13	+4
Yonkers	9	8	-1	6	6	0
Jacobi 43	10	5	-5	2	2	0
Jacobi 47	15	15	0	8	7	-1
Jacobi 49	4	11	+7	7	2	-5
Jacobi Total	29	31	+2	17	11	-6
SNUG Total	537	380	-157	224	197	-27
Niagara Falls*					10	
Utica*					17	

SNUG vs. Other Outreach Programs

- Only statewide gun violence prevention outreach program in the country
- Unique relationship with police department: the police are responsible for notifying the program manager about any shooting in the target area within 2 hours of the incident, monthly check-ins
- Training Program developed in-house and provided by SNUG administrators and site-based staff around the state who have become specialized trainers
- Set up our own computer database for documentation with de-identified data
- Developed oversight by DCJS SNUG Administrators for risk management and risk assessment
- Monthly unannounced on-site visits by SNUG Training Director with each site, to determine fidelity to the training and model
- Monthly check-in calls with outreach supervisors and program managers to discuss shooting numbers and trends
- Social workers embedded at each site to support the SNUG team, program participants, and community members
- Oversight is key to the consistency of the program



Tops Supermarket Shooting in Buffalo, NY



Workers with Should Never Use Guns (SNUG) fan out into the Cold Spring neighborhood four days after a shooting at a nearby Tops supermarket killed 10 and wounded three others. SNUG workers in Buffalo help support victims of gun violence treated at Erie County Medical Center and in city neighborhoods where gun violence is most pronounced.

John Hickey/Buffalo News



SNUG social worker Shiy Coins, left, and Tecrette Gist, a SNUG case manager, talk with Theresa Cox while assessing the needs and concerns of residents in the Cold Spring neighborhood after the May 14 shooting at a nearby Tops supermarket.

John Hickey/Buffalo News

STATS

2022 Outreach Annual

SNUG Sites	14	Possibly 15 in 2023
Active participants	472	Number of SNUG participants
Avg participant per staff	5	Average participants per caseload
Hours canvassing	5002	Hours spent by SNUG staff canvassing the community
Mediations	325	Conflict mediations led by SNUG staff
In-person participant contacts	12848	Number of times participants are seen by SNUG staff
In-person law enforcement meetings	137	Meetings between program managers and LE
Community stakeholder meetings	480	Meetings engaging community leaders and programs
Community events	240	Events to engage the community and spread violence prevention message such as community barbecues, block parties, etc.
Shooting responses	202	Marches, rallies and vigils held after any shooting in the SNUG target area
Participant events	191	Activities with SNUG participants such as day trips, game nights, art groups, etc.

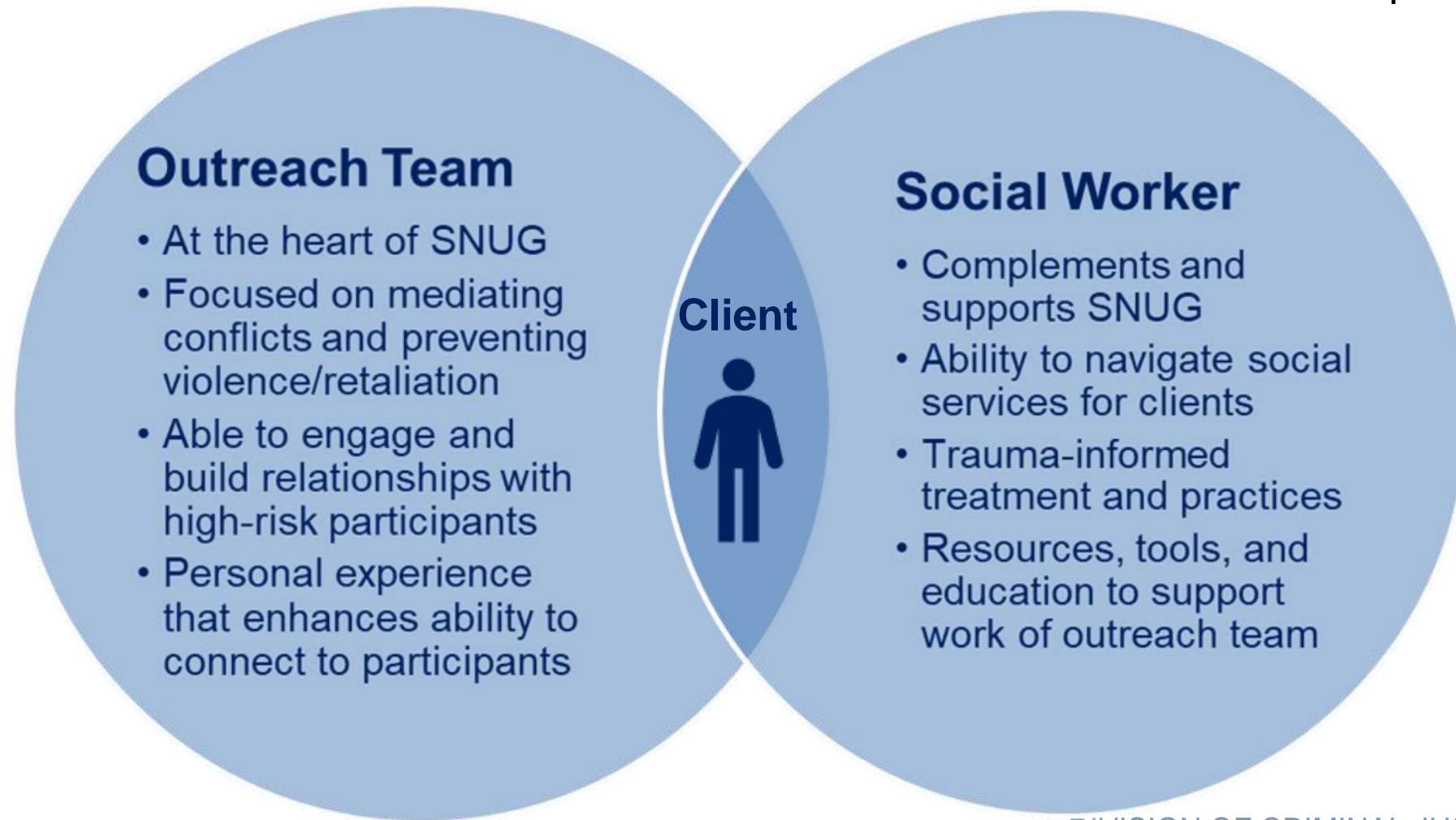
PARTNERSHIPS

Partnerships

- SNUG is receiving referrals from Parole, Probation, OCFS
- Some SNUG sites are even running programming and groups at some detention centers.
- SNUG has been working on Trust Building communication with Police and Community since 2020
- SNUG works with most Level 1 Trauma Centers in NYS
- SNUG has a limited relationship with Local Police jurisdictions and CACs

SOCIAL WORK & CASE MANAGEMENT

SNUG SWs and CMs are embedded in SNUG sites to enhance services provided



Social Work & Case Management Component

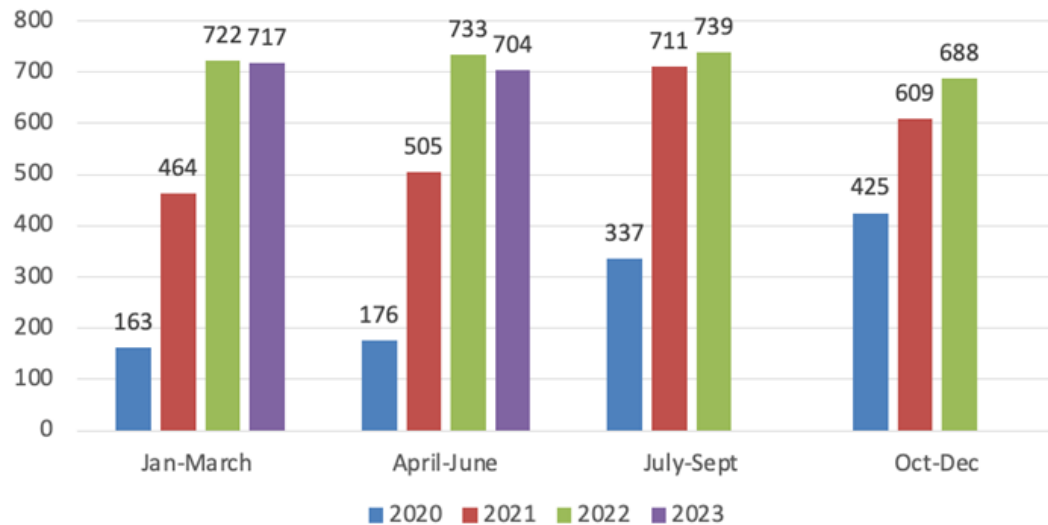
- Social Workers
 - Provide mental health support and safety-planning/emergency services to those affected by violence
- Case Managers
 - Help meet the concrete needs of those in the community affected by violence

Hospital Connection

- SNUG is located in 5 trauma centers around the state and has MOUs with smaller hospitals as well
 - Fund hospital-based social workers, psychiatrists, pediatricians, trauma surgeons
- Breaking barriers between the hospital and community-based services
- Get a read on the family and friends and address issues around retaliation
- “Golden hour” of engagement immediately after an incident
- SNUG hospital-based social worker assists family with safety planning
- SNUG team begins relationship in the hospital and follows post-discharge

SNUG SW/CM Total Individuals Served

Hospital and Site-Based



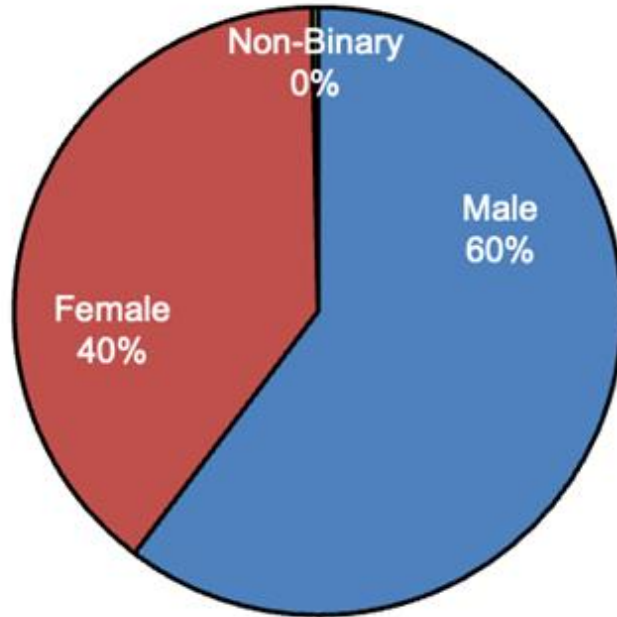
Majority of Services Provided:

- Immediate support at hospital
- Safety Issues
- Families of homicides victims (funerals)
- Concrete services
- Therapy

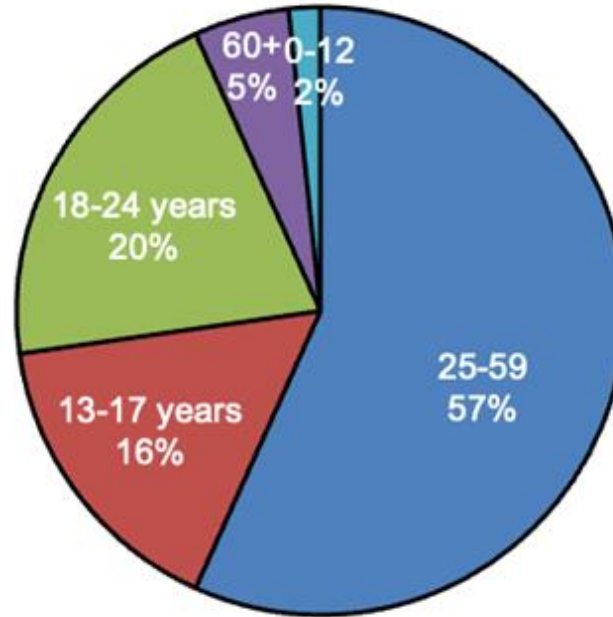
The SNUG SW/CM program was created to reach people who didn't have information about, or access to victim services, and those who were skeptical, cautious or concerned about seeking counseling and mental health services. We leverage SNUG's positive reputation in the community and its credible messengers to reach people who are underserved and marginalized, most often young men of color.

Client Demographic Breakdown

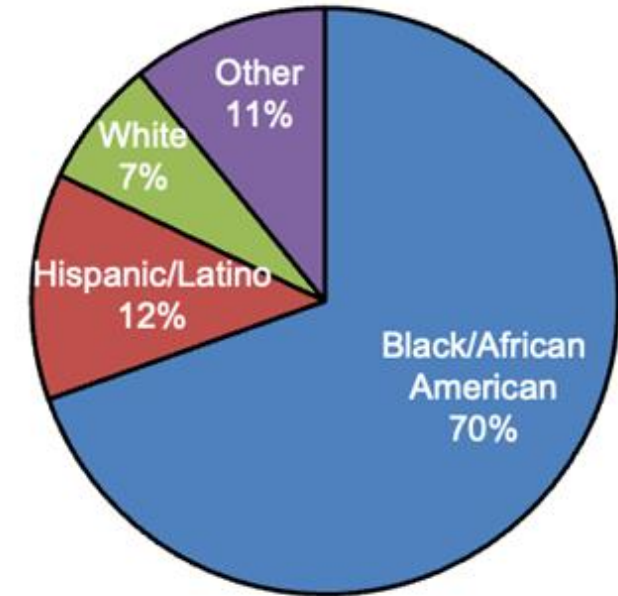
Gender



Age



Race/Ethnicity



Although young men of color are at highest risk to be victimized by gun violence, the SNUG Social Work/Case Management program is the first victim service program designed specifically to reach this population. Many programs exist for victims of domestic violence, sexual assault and child abuse. SNUG is a first of its kind, and fully recognizes that young men of color are deserving of services that meet their specific needs.



**Division of Criminal
Justice Services**